



**TEST REPORT**  
**ON**  
**9.5 TO 10 GHz**  
**SINGLE POLE TWO THROW**  
**ABSORPTIVE / NON-REFLECTIVE SWITCH MODULE**

**AMC MODEL No:**  
**MSN-2DT-05-STANDARD**  
**OPTION 910, 12X, LVT**

**Serial Numbers: 2MS909692 THRU 2MS909696**

**DESIGNED**  
**BY**  
**Dr. A. Gorwara**

**TESTED**  
**BY**  
**R. Butler**

**REPORTED**  
**BY**  
**E. Elder**

**August 6, 2004**

**AMERICAN MICROWAVE CORPORATION., 7311-G Grove Road, Frederick, MD 21704**  
**Tel: 301-662-4700 • Fax: 301-662-4938 • Email: [sales@americanmicrowavecorp.com](mailto:sales@americanmicrowavecorp.com)**  
**Website: <http://www.americanmicrowavecorp.com>**

**ISO9001 : 1994 CERTIFIED**

*LA*  
*JDT*  
*PA MDS*  
*DRH*  
*JKM*

## TABLE OF CONTENTS

●	PRODUCT DESCRIPTION AND ELECTRICAL SPECIFICATIONS	PAGE 3
●	MECHANICAL OUTLINE AND ENVIRONMENTAL SPECIFICATIONS	PAGE 4
●	PRODUCT FEATURE	PAGE 5
●	FUNCTIONAL SCHEMATIC	PAGE 6
●	TEST DATA ON MSN-2DT-05-STANDARD OPTIONS 910, 12X, LVT, SERIAL NUMBERS 2MS909692 THRU 2MS909696	PAGE 7
●	TEST DATA FOR MSN-2DT-05-STANDARD OPTIONS 910, 12X, LVT, SERIAL NUMBER 2MS909692	PAGE 8
●	TEST DATA FOR MSN-2DT-05-STANDARD OPTIONS 910, 12X, LVT, SERIAL NUMBER 2MS909693	PAGE 9
●	TEST DATA FOR MSN-2DT-05-STANDARD OPTIONS 910, 12X, LVT, SERIAL NUMBER 2MS909694	PAGE 10
●	TEST DATA FOR MSN-2DT-05-STANDARD OPTIONS 910, 12X, LVT, SERIAL NUMBER 2MS909695	PAGE 11
●	TEST DATA FOR MSN-2DT-05-STANDARD OPTIONS 910, 12X, LVT, SERIAL NUMBER 2MS909696	PAGE 12

## SINGLE POLE TWO THROW, ABSORPTIVE / NON-REFLECTIVE SWITCH MODULE AMC MODEL No: MSN-2DT-05-STANDARD OPTIONS 910, 12X, LVT

### FEATURES:

- **2.0 dB LOW INSERTION LOSS**
- **60 dB ISOLATION**
- **ABSORPTIVE / NON-REFLECTIVE**
- **INTEGRAL TTL DRIVER**
- **DESIGNED FOR LOW VIDEO TRANSIENT**

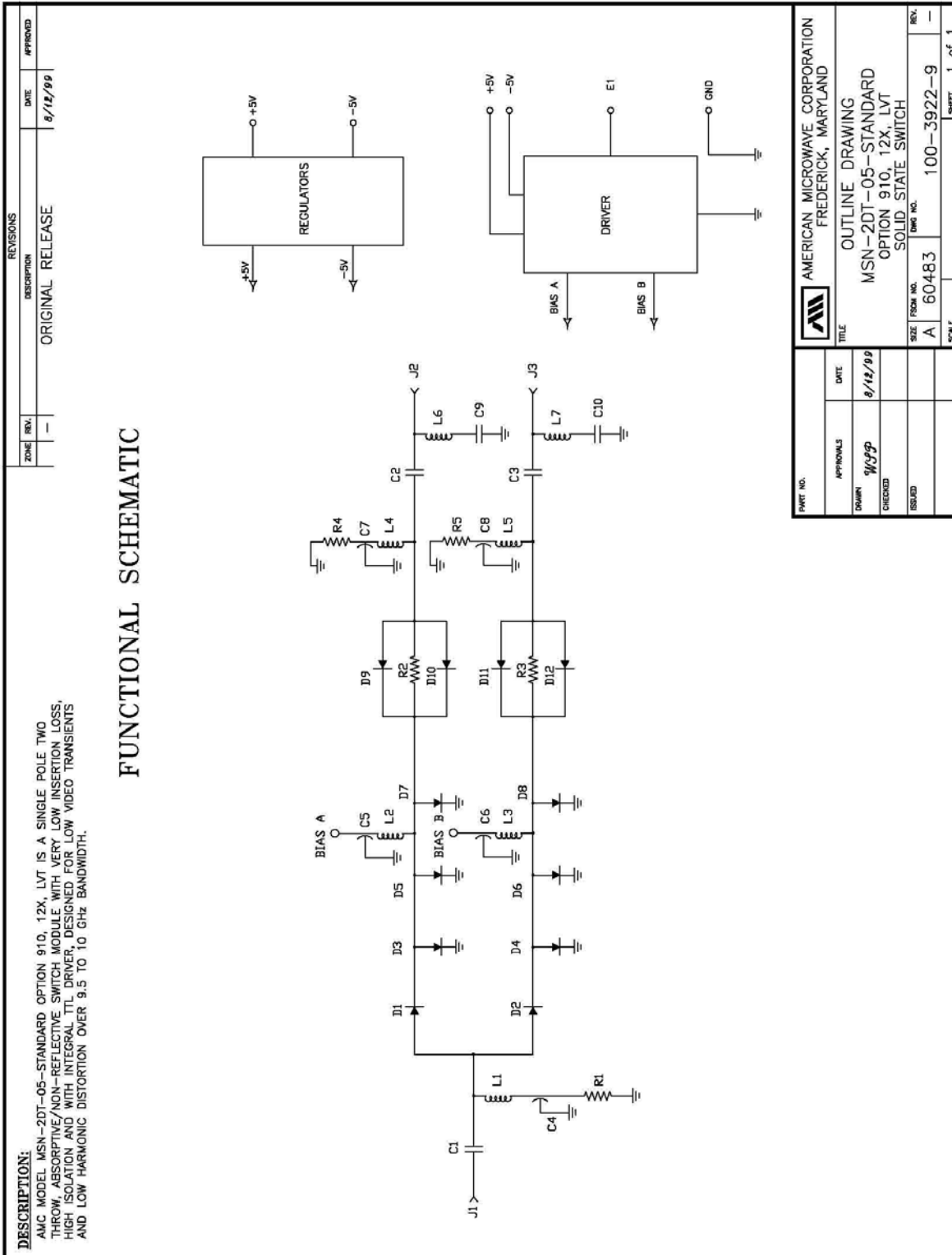
### SPECIFICATIONS:

- **FREQUENCY** : 9.5 GHz TO 10 GHz
- **INSERTION LOSS** : 2.0 dB MAXIMUM
- **ISOLATION** : 60 dB MINIMUM
- **VSWR** : 1.5:1
- **SWITCHING SPEED (50% TTL TO 10%/90% RF)** : <30 nS
- **RISE / FALL TIME (10% TO 90% RF) (90% TO 10% RF)** : <10 nS
- **MAXIMUM TOGGLE RATE (50% DC)** : >20 MHz
- **RF CONNECTORS** : SMA FEMALE
- **DC POWER SUPPLY** : +5V ±10% @ 100 mA MAXIMUM  
: -5V ±10% @ 100 mA MAXIMUM
- **CONTROL** : TTL LOGIC: "0"=ON J3-J1, "1"=ON J3-J2
- **CONTROL INTERFACE** : DC SOLDER PINS
- **HARMONIC DISTORTION** : ≤ 70 dB @ +10 dBm I/P
- **FLATNESS ACROSS BAND (ON STATE)** : ± 0.5 dB
- **VIDEO LEAKAGE** : 100 mV PEAK TO PEAK, 500 MHz BANDWIDTH (-60 dBm TO -65 dBm LEAKAGE POWER OR ENERGY IN THE BAND OF INTEREST)
- **1 dB COMPRESSION POINT** : +20 dBm
- **2 TONE, 3<sup>RD</sup> ORDER INTERCEPT POINT, P<sub>OUT</sub> 0 dBm** : +35 dBm
- **2 TONE, 2<sup>ND</sup> ORDER INTERCEPT POINT, P<sub>OUT</sub> 0 dBm** : +55 dBm
- **0.1 dB PASS BAND** : 9.5 GHz to 10.0 GHz





**FUNCTIONAL SCHEMATIC**



## FINAL TEST DATA

FINAL TEST DATA SHEETS

FOR

AMC MODEL NUMBER

**MSN-2DT-05-STANDARD**  
**OPTION 910, 12X, LVT**

Serial Numbers:

**2MS909692 THRU 2MS909696**











